



ahala

The Galapagos Islands
Ecuador



CONTENTS

WELCOME	5
CRUISE ITINERARIES	6
8 day cruises	6
5 day cruises	7
Bartholomew Island	8
Santa Cruz Island	9
Sombrero Chino Island	10
Santiago Island	11
Rábida Island	12
San Cristóbal Island	13
Española Island	14
Floreana Island	15
Santa Cruz Island	16
South Plaza Island	17
North Seymour Island	18
ISLAND VISITS	19
Visitor sites	19
Briefings	19
What to take on island excursions	19
Galapagos National Park rules	20
Wetsuit / snorkeling equipment	20
HEALTH & SAFETY	21
Safety	21
Snorkeling & swimming	21
Night time assistance	21
Landings	22
Keys	22
Crew areas	22
Smoking	22
DINING & REFRESHMENTS	23
Meals	23
Bar	23
Ice	23
Water	23
CABINS	24
Air-conditioning	24
Electrical current	24
Housekeeping	24
Beach Towels	24
Shower	24
Caring for the environment	24
Wake-up calls	24
FACILITIES & SERVICES ON BOARD	25
Lounge	25
Bulletin board	25
Telephone	25
Guest Book	25
Shop	25
Payments on board	25
Taxes & service charge	25
Cruise survey	26
Tipping / gratuities	26
Check out & airport transfer	26
ABOUT ATHALA	27
Deck plans	27
Catamaran specifications	28
Your crew	29



"It is not the strongest of the species that survives, nor the most intelligent, but the one most responsive to change."

"I have called this principle, by which each slight variation, if useful, is preserved, by the term Natural Selection."

"Man tends to increase at a greater rate than his means of subsistence."

"We must, however, acknowledge as it seems to me, that a man with all his noble qualities...still bears in his bodily frame the indelible stamp of his lowly origin."

Charles Darwin
Naturalist (1809 - 1882)

WELCOME ABOARD

Dear Guest,

Welcome to Galapagos and welcome aboard the Motor Catamaran Athala.

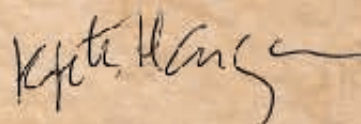
We are delighted to have the opportunity of hosting you. Our main and most important goal is to provide a friendly, efficient and professional service that will make your visit to Galapagos a very enjoyable, pleasant and memorable experience.

Your guide, captain and crew are highly experienced and trained to satisfy your requirements to make your stay a first class occasion.

This booklet details information about your cruise and the Galapagos National Park.

We hope you enjoy Athala and the Galapagos Islands.

Thank you for choosing us.



Kjetil Haugan

President
Haugan Cruises

8 DAY CRUISE – Tuesday to Tuesday*

- Tue.** am: Arrive San Cristóbal & transfer to boat
pm: San Cristóbal Island: Galapaguera
or Interpretation Center
- Wed.** am: Española Island: Gardner Bay
pm: Española Island: Suárez Point
- Thu.** am: Floreana Island: Post Office Bay &
Baroness Viewing Point
pm: Floreana: Devil's Crown & Cormorant Point
- Fri.** am: Santa Cruz: Charles Darwin Station
pm: South Plaza Island
- Sat.** am: North Seymour Island
pm: Bartholomew: Pinnacle Rock
- Sun.** am: Santa Cruz Island: Cerro Dragon
pm: Sombrero Chino Island
- Mon.** am: Santiago Island: Egas Port
pm: Rábida Island: Red beach
- Tue.** am: San Cristóbal Island: Isla Lobos
& airport transfer

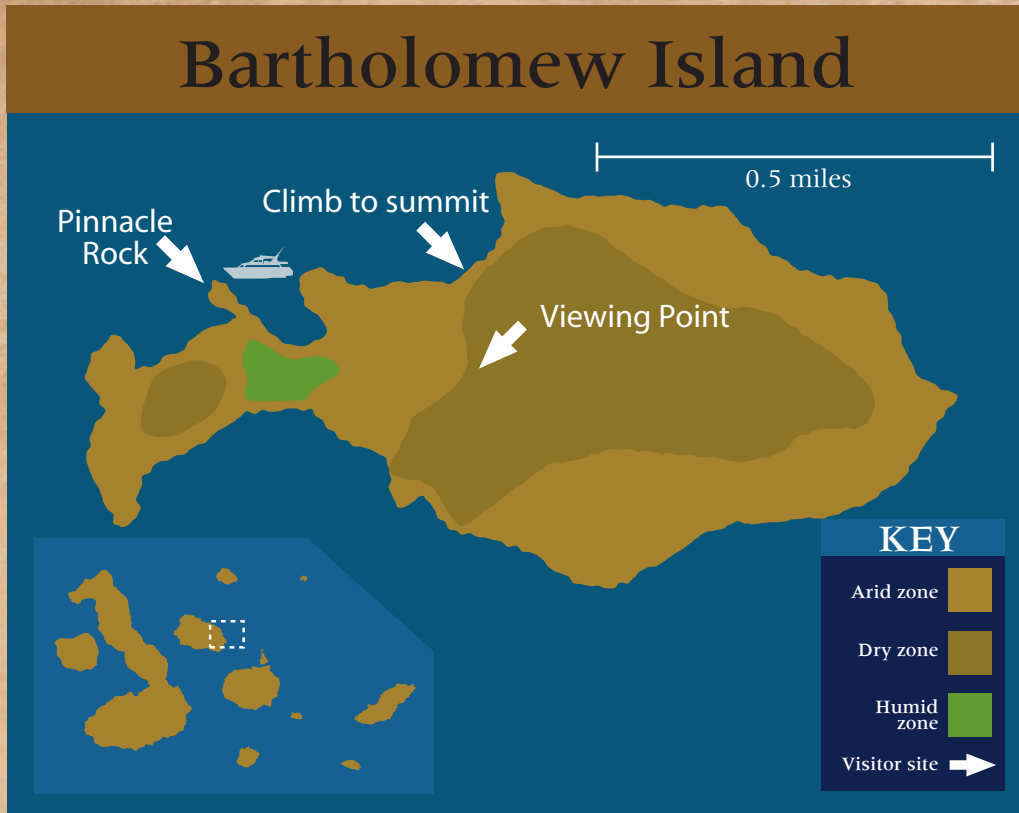
***Please note:** Itineraries are unlikely to change significantly but are subject to change. Weather, wildlife breeding, instructions from the Galapagos National Park, specific abilities and interests of passengers as well as operational matters may cause your guide or captain to change the times or nature of visits. Your guide will always endeavor to select the best itinerary within these limits.

5 DAY CRUISE – Tuesday to Saturday*

- Tue.** am: Arrive San Cristóbal & transfer to boat
pm: San Cristóbal Island: Galapaguera
or Interpretation Center
- Wed.** am: Española Island: Gardner Bay
pm: Española Island: Suárez Point
- Thu.** am: Floreana Island: Post Office Bay &
Baroness Viewing Point
pm: Floreana: Devil's Crown & Cormorant Point
- Fri.** am: Santa Cruz: Charles Darwin Station
pm: South Plaza Island
- Sat.** am: North Seymour Island & airport transfer

4 DAY CRUISE – Saturday to Tuesday*

- Sat.** am: Arrive Baltra & transfer to boat
pm: Bartholomew: Pinnacle Rock
- Sun.** am: Santa Cruz Island: Cerro Dragon
pm: Sombrero Chino Island
- Mon.** am: Santiago Island: Egas Port
pm: Rábida Island: Red beach
- Tue.** am: San Cristóbal Island: Isla Lobos
& airport transfer



Saturday afternoon:

Bartholomew Island

Bartholomew is the home to the Pinnacle Rock and the most famous vista in the Galapagos Islands. You may see sharks swimming close to the shore. You may also get a chance to swim with the Galapagos Penguin. Climbing to the top of this island rewards visitors with panoramic views of varied lava formations, volcanic peaks and a moon-like landscape.

Pinnacle Rock:

Type of landing: Wet

Difficulty of walk: Easy

Climb to summit:

Type of landing: Dry

Difficulty of walk: Moderate

Highlights:

- Snorkeling
- Penguins*
- Rays
- Pinnacle Rock
- Panoramic view
- Moon-like landscape
- Pioneer plants
- Lava cactus





Sunday morning:

Cerro Dragon

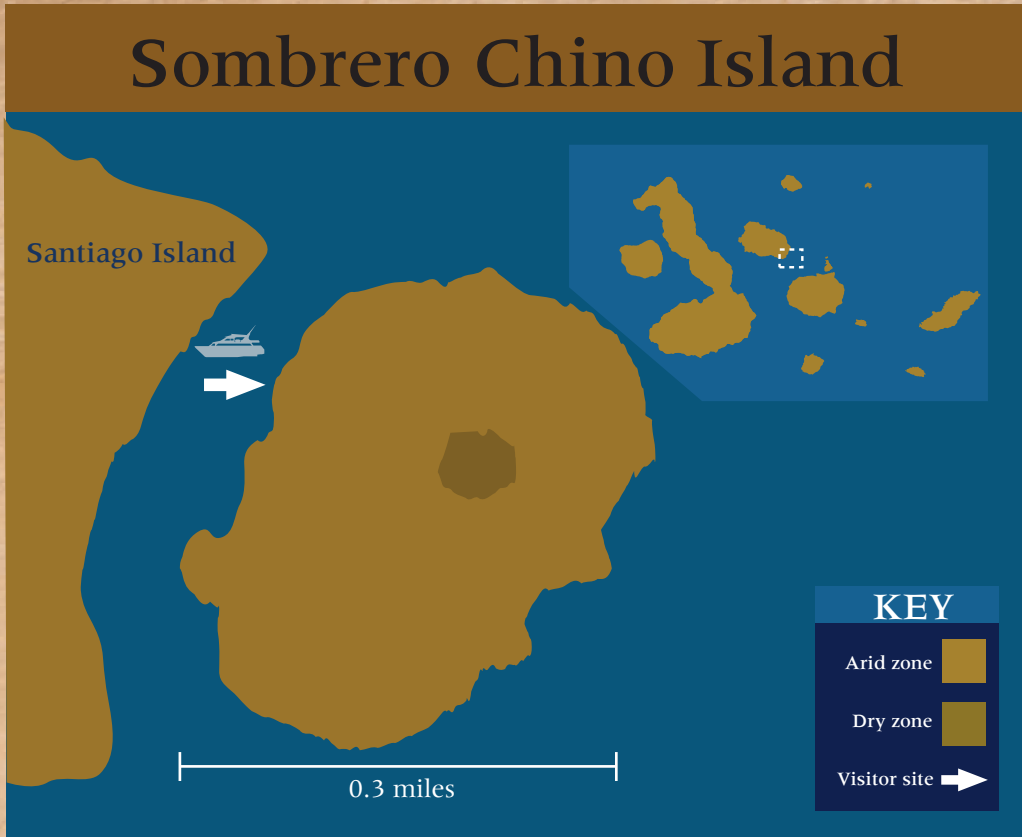
Early in the morning you will have a dry landing at one of the sites that was impressively affected by introduced goats. In the actuality it is one of the few areas where to find Land Iguanas, an endemic species of the islands. Flamingos might surprise us in company of different shore birds as stilts, gulls and others. An unique landscape that blends perfectly with the arid vegetation filled in with cacti, this will lead us to a green exuberant vegetation. A walk for a total distance of 2 1/2 miles around.

Type of landing: Dry
Difficulty of walk: Easy

Highlights:

- Flamingos
- Land Iguanas
- shorebirds
- Land birds
- Endemic vegetation





Sunday afternoon:

Sombrero Chino Island

The afternoon is a great new adventure filled in with once alive lava. After a wet landing a walk of a mile 1/2 will show us the top predator of the islands, the Hawk, together with a blue, red, purple, yellow collage of Sally Light Foot Crabs. The black is also there, marine iguanas will blend perfectly against the black lava. Sea lions all over the coast commonly go for a refreshing bath at the time you enjoy of a delightful swim or snorkeling at one of the places with the most clear and calm water filled in with marine life.

Type of visit: Panga ride

Highlights: *Galapagos Hawk*
Lava
Geology
Marine Iguanas
Snorkeling





Monday morning:

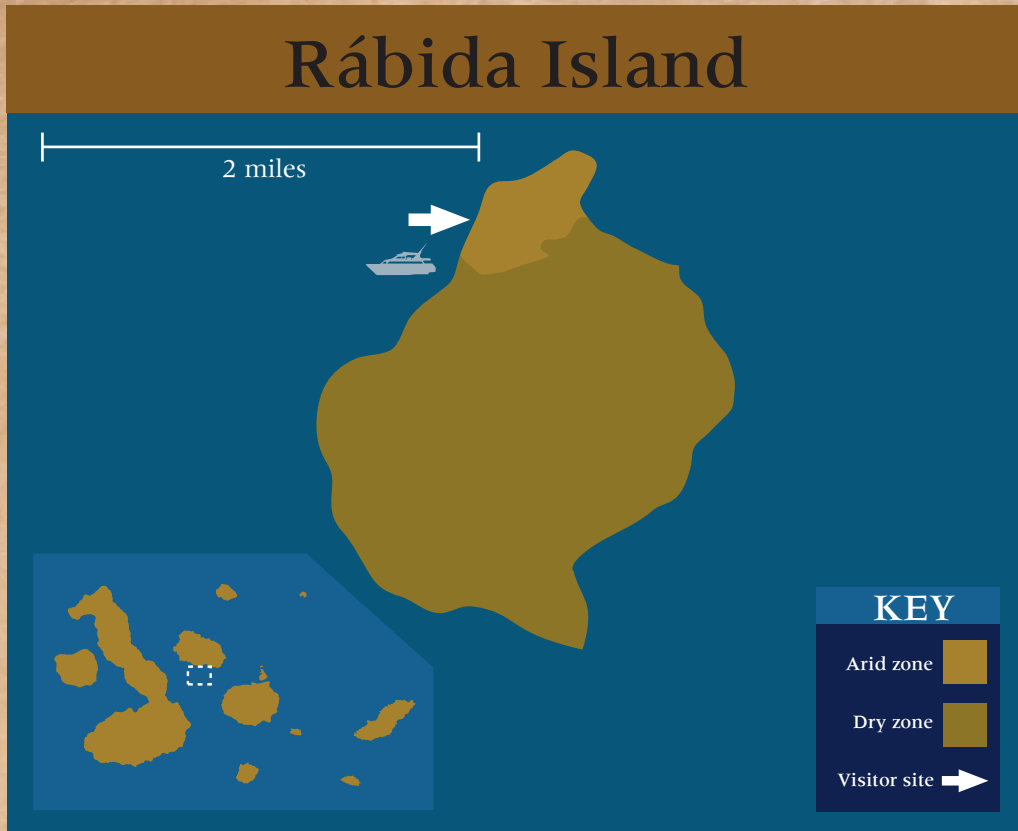
Egas Port

Egas Port (also called South James Bay) is on the northwest side of Santiago Island. The lava and black sand beaches make for great photography. Egas Port is one of the few places in Galapagos where you can see Galapagos “Fur seals”. We start with an easy walk along the beach. Here you will also find good snorkeling off the beach with a broad array of marine life to be seen.

Type of landing: Wet
Difficulty of walk: Easy

- Highlights:**
- Fur seal grotto*
 - Tidal pools
 - Galapagos hawk
 - Oyster catchers
 - Marine iguanas
 - Finches
 - Snorkeling





Monday afternoon:

Rábida Island

Rábida Island (also called Jervis) is a bird-watcher's delight. Some of the rarest species are in abundance, such as 9 varieties of finches, large billed flycatchers, Galapagos hawks and brown pelicans. The trail starts along the red sand beach and then to the top of a hill where you will have a great view of the surrounding landscape.

Type of landing: Wet
Difficulty of walk: Easy / Moderate

- Highlights:**
- White cheeked pintail ducks
 - Sea lions
 - Snorkeling
 - Red beach
 - Brackish water lagoon
 - Palo santo trees*





Tuesday morning: Isla Lobos

Tuesday afternoon: Galapaguera or Interpretation Center

In the morning we anchor at Isla Lobos. The name "Isla Lobos" means Sea Lion Island, which is certainly appropriate since many sea lions frolic, leap and make their homes here. This island is also a great place for snorkeling (and if we're lucky with the sea lions as well).

After lunch we disembark at Puerto Baquerizo Moreno, the capital of the Galapagos Islands. From here we take a one hour bus ride to the Galapaguera. This is a great place that allows you to see the Giant tortoise in its natural environment. You can see baby tortoises as well as the large adults. A visit to the Interpretation Center on San Cristobal is also possible.

Type of landing: Dry
Difficulty of walk: Easy
Type of visit: Panga ride

Highlights: Snorkeling
Sea lions
 Great frigate birds
 Lava lizards
 Giant tortoise





Wednesday morning:

Gardner Bay

Española Island (also called Hood) is the southernmost island and teems with wildlife. It is the breeding site of nearly all of the world's 12,000 pairs of waved albatrosses. Gardner Bay has a lovely white sand beach where you will see a sea lion colony. It is a good place for snorkelling or just relaxing on the beach.

Type of landing: Wet

Difficulty of walk: Easy

Highlights: White sand beach
Sea lions
Mockingbirds
Snorkeling

Wednesday afternoon:

Suárez Point

Suarez Point is often listed as a favorite Galapagos visitor site. Along a 2 mile (3km) walk you have the chance to see blue-footed boobies and waved albatross as well as the famous "blowhole" spurt water high into the air. The landscape is great for photography.

Type of landing: Dry

Difficulty of walk: Difficult

Highlights: Hood mocking bird
Nazca boobies
Marine iguanas
Waved albatross
(april-december)
Red-billed tropic birds
Blowhole
Lava lizards
Galapagos hawk
Blue footed boobies





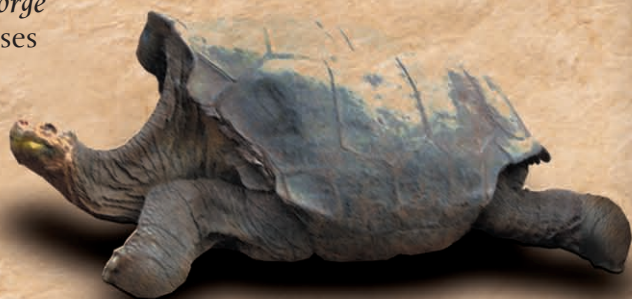
Friday morning:

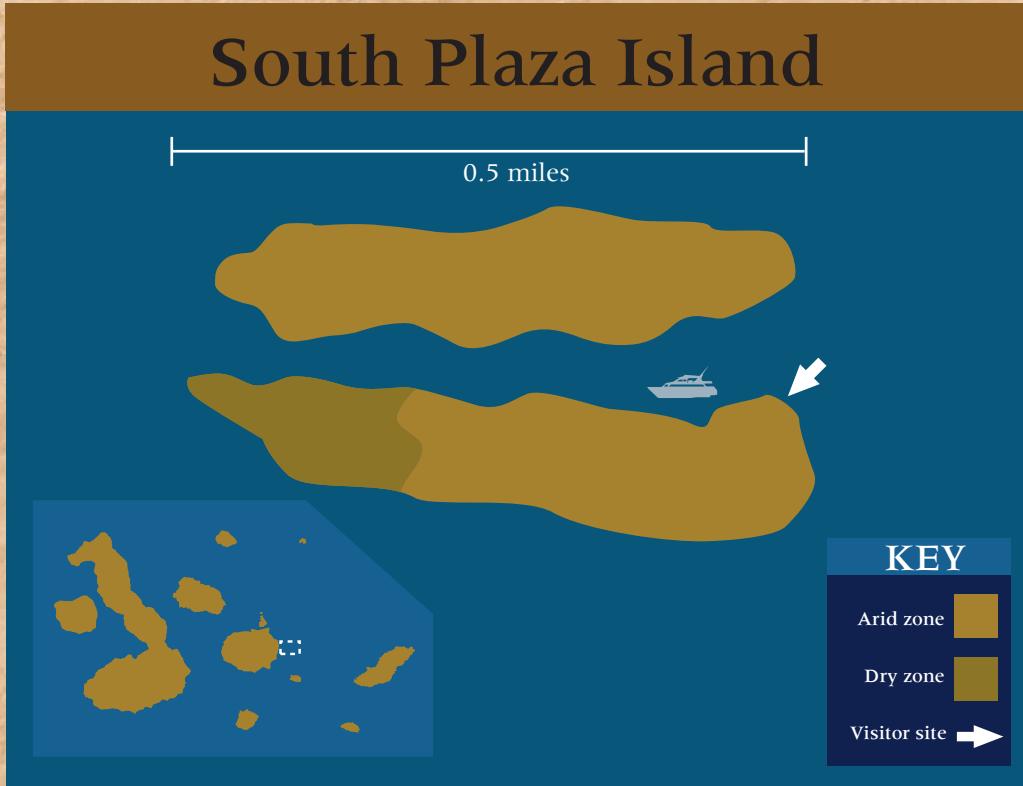
Charles Darwin Research Station

The visit to the Charles Darwin Research Station allows you to learn about the giant tortoise breeding and repatriation program and the eradication of introduced species. You will be able to walk among the giant tortoises. The station is also home to the world’s rarest animal. There is only one Pinta Island giant tortoise remaining on this planet. He is known as Lonesome George and when he dies the Pinta tortoise will be extinct. Afterwards you will have an opportunity to look around Puerto Ayora (souvenir shopping etc.).

Type of landing: Dry
Difficulty of walk: Easy

Highlights: *Lonesome George*
 Giant Tortoises





Friday afternoon:
South Plaza Island

South Plaza Island was formed by lava streaming up from the bottom of the ocean. Despite its small size it is home to a large number of species and it is famous for its extraordinary flora.

The most characteristic plant is the sesuvium. During the rainy season its color is a green to yellowish tone, in the dry season (end of June till January) a bright red. Also typical are the opuntia cactus that can be found on the whole island and which are the main nourishment of the land iguanas.

Type of landing: Dry
Difficulty of walk: Easy

- Highlights:**
- Land Iguanas
 - Pelicans
 - Frigatebirds
 - Audubon’s shearwaters
 - Masked boobies
 - Swallow-tailed gulls





Saturday morning:

North Seymour Island

North Seymour is a very low lying island and has a very large population of blue footed-boobies. It is also home to the largest colony of the magnificent frigate birds on the Islands. The large red pouch of the males makes for quite a spectacle. The first half of the trail is sandy but the second half is rocky (be sure to bring good walking shoes).

Type of landing: Dry
Difficulty of walk: 1st half Easy/ 2nd half Difficult

- Highlights:**
- Frigate birds*
 - Blue footed boobies
 - Marine iguanas
 - Sea-lions
 - Swallow-tailed gulls



Please note: Itineraries are unlikely to change significantly but are subject to change. Weather, wildlife breeding, instructions from the Galapagos National Park, specific abilities and interests of passengers as well as operational matters may cause your guide or captain to change the times or nature of visits. Your guide will always endeavor to select the best itinerary within these limits.

ISLAND VISITS

VISITOR SITES

The catamaran will anchor at two visitor sites each day. You will be ferried to the islands in pangas (local name for dinghies). Landings may be “wet” or “dry”. At wet landings you will step from the panga into water and wade to shore. At dry landings you step directly onto land. Once ashore your guide will lead you along marked trails explaining the natural history as you walk. Shore visits are done at a leisurely pace allowing plenty of time to enjoy and photograph the amazing wildlife and scenery. Typically you will spend between 2 and 4 hours at each site. There is often an opportunity to swim and / or snorkel during these visits. At some visitor sites you will not actually go ashore. In such cases, the visit will be a panga ride to observe the wildlife etc and may involve snorkeling from the panga as well.

BRIEFINGS

Your guide will give daily briefings to describe the next day’s activities (visitor sites, dry or wet landing, panga rides, safety, timings etc). Briefings are normally carried out in the lounge before dinner.

WHAT TO TAKE ON ISLAND VISITS

- Hat with a brim
- Sunscreen
- Sunglasses
- Bottle of water
- Appropriate footwear
- Personal medications
- Cameras and binoculars
- Extra film, memory cards, discs
- Spare batteries
- Small ruck-sack
- A walking stick if you need one
- A light raincoat (depending on the weather)
- Insect repellent

GALAPAGOS NATIONAL PARK RULES

The Galapagos Islands were UNESCO's first natural World Heritage site. To preserve the islands, the Galapagos National Park has established rules for all visitors which your guide is required to both explain and enforce. Please adhere to the regulations.

The basic rules are:

- Follow the instructions of your guide
- Do not touch or feed the animals
- Do not get too close to the animals
- Do not disturb or chase any animals
- Do not litter
- Do not smoke on the islands
- Do not take food or drinks onto the islands (water is allowed)
- Do not remove any animal, animal remains, plant, plant remains or rock material from the islands
- Stay on the marked trails
- Stay with your group and guide at all times
- Whenever you leave the visitor sites please clean your shoes and feet to avoid transporting seeds.
- Shore visits are between 6 AM and 6 PM

- *TAKE ONLY PHOTOS, LEAVE ONLY FOOTPRINTS*

WETSUIT / SNORKELING EQUIPMENT

Use of snorkeling equipment is complimentary. You will be provided a bag for your fins and masks. The snorkeling bags and wetsuits will have a small tag with your cabin number on it for easier identification.

HEALTH & SAFETY

SAFETY

Our priority is safety. Please pay special attention to safety matters so as not to jeopardize your own safety, or the safety of other passengers and crew members. Your guide will explain to you the safety procedures during the daily briefings. Here is a summary of the main safety points:

- Memorize your way to the deck in case of emergency.
- Check exactly where the life vests are in your cabin.
- Always use the life vests provided while riding in the pangas.
- Accept assistance when getting on /off the boat and panga.
- Be careful when walking on the deck while the boat is moving.
- Advise your guide of any medical issues or allergies.
- Drink plenty of water.

SNORKELING & SWIMMING

Be careful when snorkeling and swimming. Currents can be strong, the water can be cold and waves can be large. Please take precautions and pay close attention to the instructions. The main safety points are listed below:

- Do not go into the water unless you are sure that you are in sufficient good health and physical condition.
- Follow your guide's instructions.
- Remain with the guide, panga and the group at all times.
- If you feel more comfortable in the water with a life vest, you are welcome to wear one.
- Choose a snorkeling buddy.
- Swim into the current first.
- Call the supporting panga if you are tired.
- Stay away from the outboard motor at the back of the panga.
- Never get on / off the panga at the back.

NIGHT TIME ASSISTANCE

If you require assistance during the night please call any of the crew or go directly to the captain's or cruise manager's cabin.

LANDINGS

The shores of the islands, and the access to visiting sites, can have rocky surfaces or beaches. Landings may be "dry" or "wet". Dry landings are easily performed, as we find a flat rocky surface or pier for proper docking. When a beach is the only way of accessing a visitor site, we have to perform a wet landing. These are also quite simple, just remove your shoes & socks, swing your legs over the side of the panga and wade ashore. From time to time, we may find rougher swells than the usual, so the wet landing may require extra caution. At any landing, please follow the instructions of your guide and crew.

KEYS

We do not issue keys to the cabins. Valuables may be stored in the cabins or in the ship's safe.

CREW AREAS

Restricted areas for crew only (work areas and living quarters) are clearly marked. All other areas are open to guests. The bridge has an open policy, and you are most welcome to visit.

SMOKING

Smoking is not allowed on the islands or within enclosed areas of the boat. Smoking is permitted on deck though we ask that you be considerate of other passengers who may be within the vicinity.

DINING & REFRESHMENTS

MEALS

Meals on board are usually served at the following times:

Breakfast buffet starting:	6:30 am
Lunch buffet:	midday
Dinner a la carte starting:	6:30 pm

Times will vary depending on the daily program. Light snacks, tea and coffee are served between meals. Meals are served in the dining area with the exception of some lunch buffets and barbeques that are served on the deck.

If you have any special dietary needs please let us know. We will do our best to accommodate your needs.

BAR

Water and other soft drinks are complimentary. There is also a range of alcoholic beverages available. The barman will start a bar tab for you. Please feel free to help yourself to drinks from the bar and simply note your consumption on the bar tab.

ICE

Ice is available from the machine at the bar. Please request ice from the barman or just help yourself.

WATER

The water from the taps on board is potable however we advise our guests only to drink water from the dispensers located in the communal areas.

We are self-supplied with water. Our two reverse osmosis desalinating plants produce sufficient potable water for an ample daily consumption.

CABINS

AIR-CONDITIONING

All cabins and communal areas for passengers have air-conditioning (A/C). Simply press the start/ stop button to operate the A/C. Red light indicates A/C is off, green light indicates A/C is on. Please ensure that all windows and doors are shut before operating the A/C.

ELECTRICAL CURRENT

All electrical outlets on board are 110V. Special outlets for 220V are available in some public areas.

HOUSEKEEPING

The cabins are cleaned every morning. We provide you with at least two full services per day. We normally service all cabins while you are enjoying your outing, but if for some reason you decide to stay in your cabin, we will not disturb you.

BEACH TOWELS

Special colored beach towels will be provided for use on deck and onshore. Please do not take the cabin towels to the beach or to the sun deck.

SHOWER

The shower in your cabin is equipped with dual controls, for both hot and cold water. Since we convert salt water into fresh water onboard (desalination), water conservation is always a concern of ours. Whenever possible, please save water.

CARING FOR THE ENVIRONMENT

We care for the world we live in and try to operate in an environmentally friendly manner. Please help us by keeping your water and air-conditioning use on board to a minimum. Towels are changed according to our environmental policy every two days.

WAKE UP CALL

You will receive a wake up call via the PA system every morning approximately 45 minutes before breakfast (or before departure time if the first visit is prior to breakfast).

CRUISE SURVEY

At the end of your cruise you will be given a cruise survey. We are always looking to improve the Galapagos experience that we offer and would appreciate if you could spare a few minutes to complete the survey.

TIPPING / GRATUITIES

In Galapagos it is customary to leave a tip for the guide and crew separately. Tips are at the sole discretion of the passengers and should be based on the level of service received. If you wish to leave a tip you may give directly to the relevant staff member. Alternatively, you can put cash or travelers checks in the envelopes marked "CREW" and "GUIDE" that will be left in your room on your last day. Please put the envelopes in the gratuity box that will be left in the dining area on the day of your departure. All the money in the "CREW" envelope will be shared equally amongst the 10 crew members.

Here is a guideline based on past experience. If service has been excellent, the average tip has been US\$ 10-20 per person per day for the entire ship's crew and US\$ 8-10 per person per day for the guide.

Please understand that is just a suggestion: tipping and gratuities are a very personal matter and it entirely depends on the value of the service you receive.

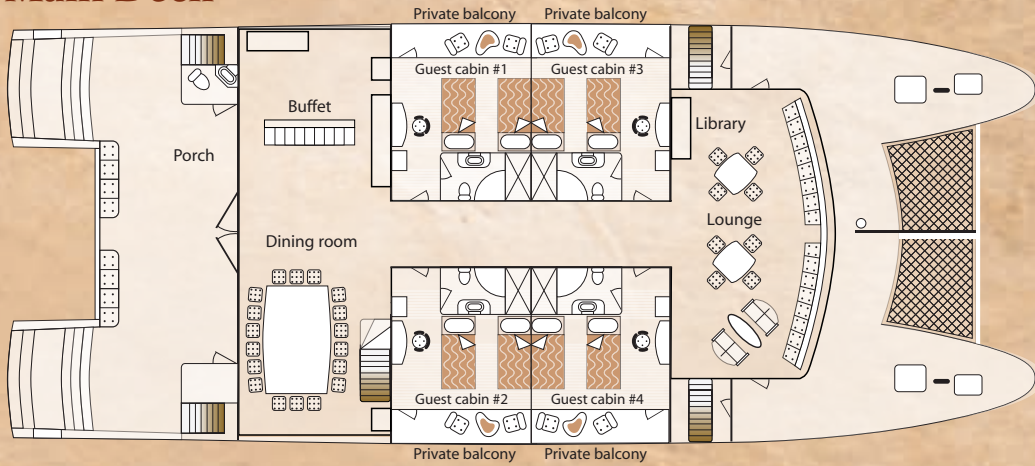
CHECK-OUT / AIRPORT CHECK-IN

On your last day, please pack your bags and leave them in the corridor. Your crew will transport your baggage to the airport and your guide will take care of check-in.

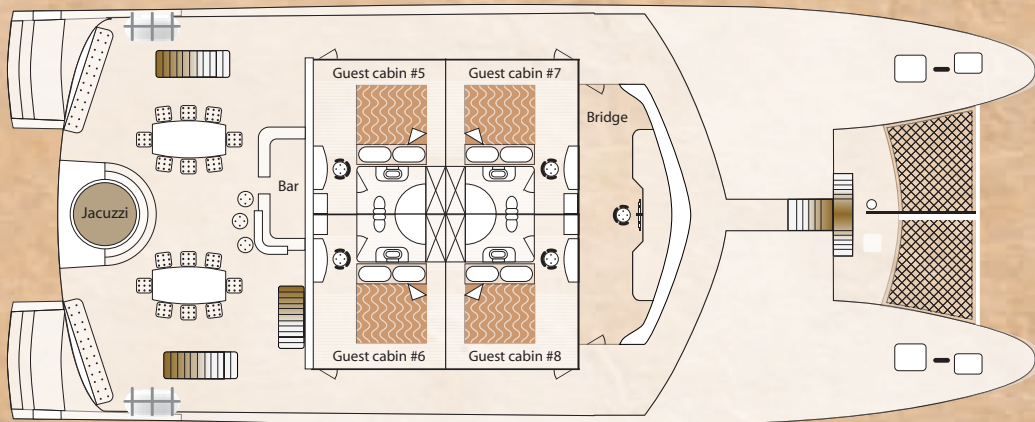
ABOUT ATHALA

DECK PLANS

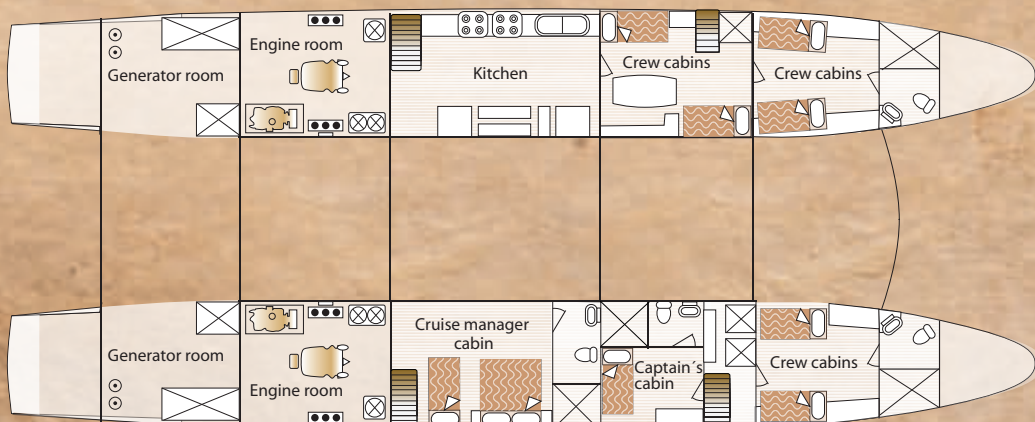
Main Deck



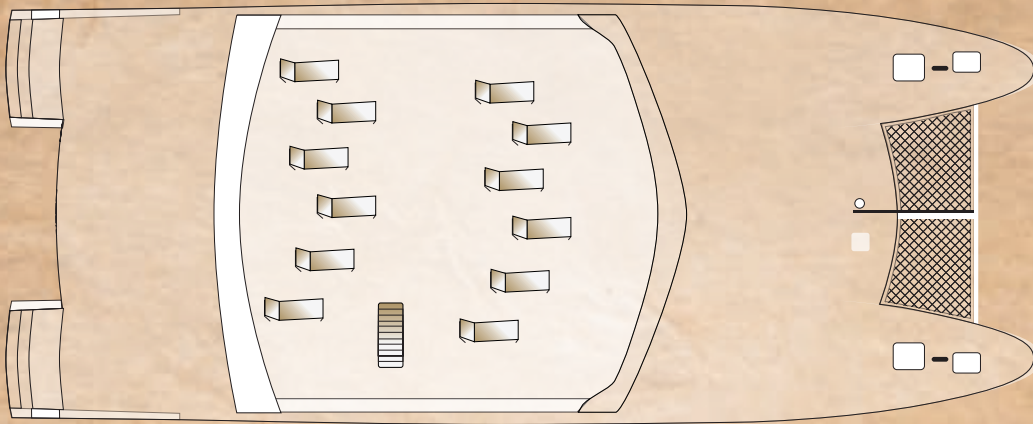
Upper Deck



Lower Deck



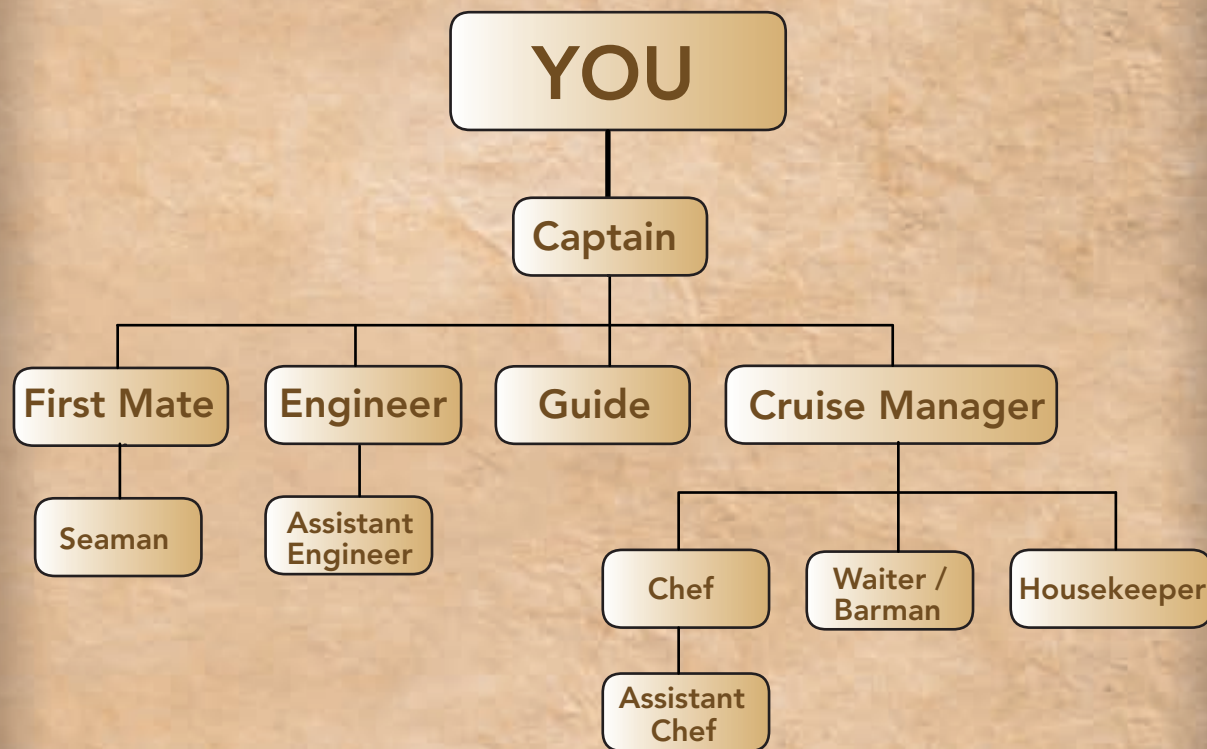
Sun Deck



TECHNICAL SPECIFICATIONS

- Year of construction: 2007
- Category: luxury class
- Type: motor catamaran
- Length: 98 feet / 30 m
- Beam: 37 feet / 11 m
- Draft: 4.6 feet / 1.40 m
- Gross tonnage: 317 tons
- Capacity: 16 passengers
- Cabins: 8, each a minimum 175 square feet
- Main engines: 2 John Deere 6081 AFM 300 HP
- Max speed: 12 knots
- Water maker capacity: 2000 gallons / day
- Material construction: fiber-reinforced polymer composite
- Interiors: wooden flooring
- Exterior: mature teakwood flooring
- Crew: 10 + 1 naturalist bilingual guide
- Safety & Navigation: All equipment meets / exceeds the international SOLAS standard: 2x 20-man life craft, Navnex, 2 GPS, sonar, 2 naval radars, fire detection and prevention systems etc, etc.

YOUR CREW



Haugan Cruises

Andres Xaura N24-200 between Lizardo Garcia and Foch, Quito, Ecuador

www.haugancruises.com

Tel.: (593-2) 254 7587, (593-2) 223 5095, (593-2) 252 8051, (593-2) 255 4080,

(593-2) 255 1984, (593-2) 252 3223, (593-2) 254 9721

Tel. (toll free from USA): 1 877 436 7512

www.galapagosislands.com



The Galapagos Islands - Ecuador

Haugan Cruises

Andres Xaura N24-200 between Lizardo Garcia and Foch, Quito, Ecuador

www.haugancruises.com

Tel.: (593-2) 254 7587, (593-2) 223 5095, (593-2) 252 8051, (593-2) 255 4080,
(593-2) 255 1984, (593-2) 252 3223, (593-2) 254 9721

Tel. (toll free from USA): 1 877 436 7512

www.galapagosislands.com